

FOR SALE - SPALDING BUILDING

11515 - 105 Avenue, Edmonton, Alberta



SITE AREA: 15,465 SF

BUILDING: 11,806 SF

ZONED: DC2 -- AREA 3
-- Precinct E, Bylaw 14141

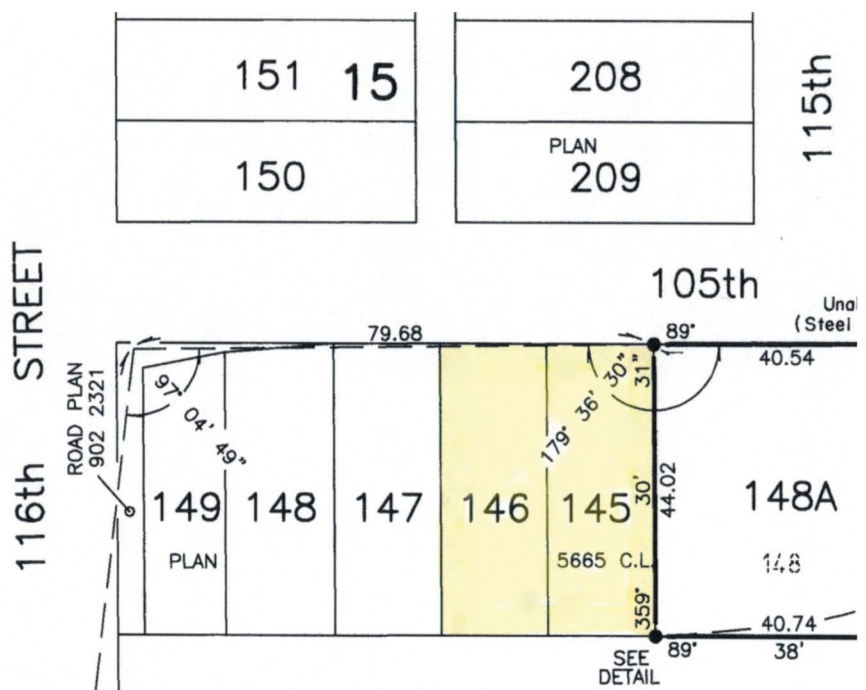
DISTRICT: Queen Mary Park

STRATEGIC LOCATION:

The site is backing on to Oliver Square Shopping Centre & just two minute walk to the new Brewery District, Fitness, Winners, President's Choice Grocery Store, Coffee Shops & Restaurants.

MULTI-FAMILY DEVELOPMENT SITE:

This site will accommodate 40 to 43 Condominiums.



LIST PRICE: \$1,750,000

EXCLUSIVELY LISTED FOR SALE BY:

Hugh Fraser (780) 499-0948

realty@chughfraser.com

FRASER-TRADEX REALTY INC. *Your Real Estate Professionals*

(780) 499-0948 Fax (780) 458-6900 Realty@chughfraser.com P.O. Box 4, Stn Main, St. Albert, AB T8N 1N2



FOR SALE - SPALDING BUILDING

11515 - 105 Avenue, Edmonton, Alberta

