

# FOR SALE - Horse Hill Neighbourhood 1 Lands

Prime Development Lands 49 Acres – 167 Avenue NE, Edmonton



## EXCELLENT DEVELOPMENT OPPORTUNITY:

- Prime residential lands backing onto Horse Hill Ravine & next to North Saskatchewan River Valley
- Access to 167 Avenue
- Potential for Exclusive Estate Housing
- Close to Quarry Ridge Community & Golf Course

## EXCLUSIVELY LISTED FOR SALE BY:

**Hugh Fraser** (780) 499-0948

realty@chughfraser.com

**Garry Stebner** (780) 918-5289

glstebner@shaw.ca



**FRASER-TRADEX REALTY INC.** *Your Real Estate Professionals*

(780) 499-0948 Fax (780) 458-6900 Realty@chughfraser.com P.O. Box 4, Stn Main, St. Albert, AB T8N 1N2





# FOR SALE - Horse Hill Neighbourhood 1 Lands

Prime Development Lands 49 Acres — 167 Avenue NE, Edmonton

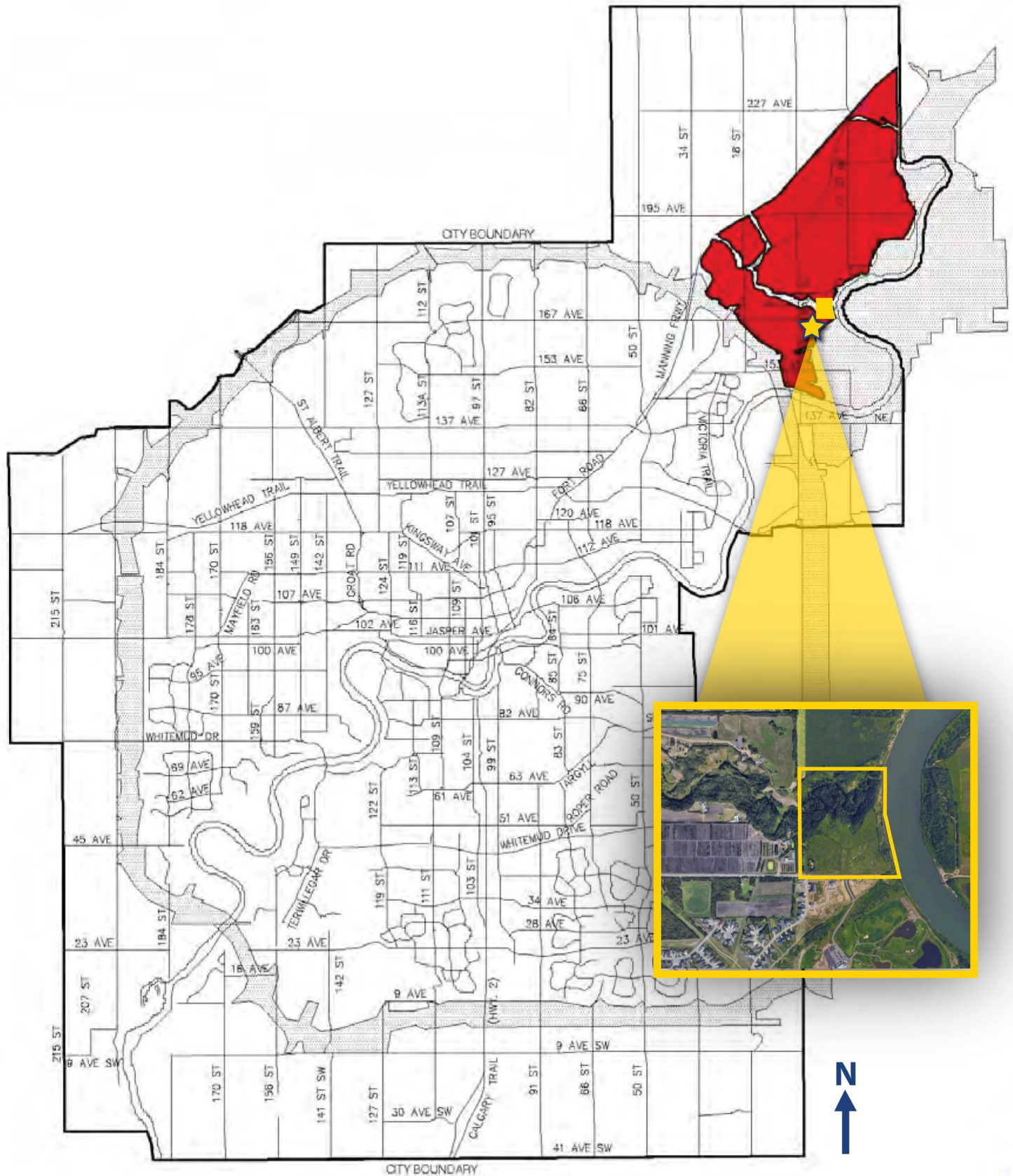
## HORSE HILL AERIAL MAP SE 4-54-23-W4





## Prime Development Lands 49 Acres – 167 Avenue NE, Edmonton

# NORTHEAST AREA STRUCTURE PLAN





# FOR SALE - Horse Hill Neighbourhood 1 Lands

Prime Development Lands 49 Acres – 167 Avenue NE, Edmonton

## HORSE HILL AREA STRUCTURE PLAN

