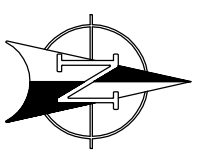


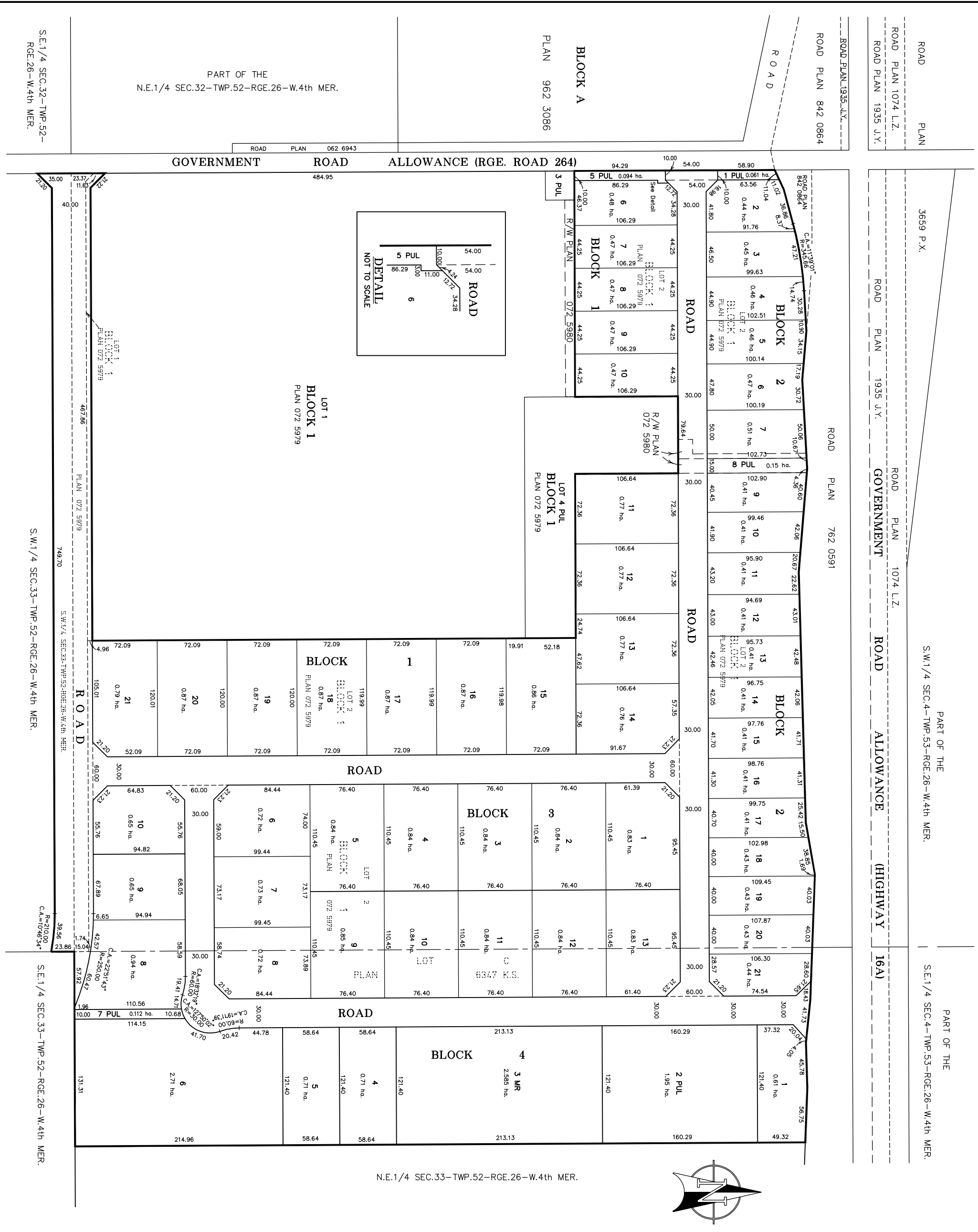
GENESIS LAND DEVELOPMENTS CORP.

ALL DISTANCES ARE SHOWN IN METRES AND DECIMALS THEREOF.
 DISTANCES ON CURVED BOUNDARIES ARE ARC LENGTHS.
 AREA AFFECTED BY REGISTRATION OF THIS PLAN SHOWN THUS:
 AND CONTAINS:
 55 LOTS = 10.45 ha.
 5 PUL LOTS = 37.19 ha.
 1 MR LOT = 2.37 ha.
 1 MR LOTS = 2.59 ha.
 TOTAL 61 LOTS AND ROADS = 52.6 ha.

ROAD, PLAN 6347K.S. = 1.212 ha.
 LOT C, PLAN 6347K.S. = 15.25 ha.
 LOT 1, BLOCK 1, PLAN 072 5979 = 0.247 ha.
 LOT 2, BLOCK 1, PLAN 072 5979 = 34.25 ha.
 S.W.1/4 SEC.33-52-26-4 = 1.824 ha.
 TOTAL = 52.6 ha.



N.E.1/4 SEC.33-TWP.52-RGE.26-W.4th MER.



TENTATIVE PLAN

SHOWING SUBDIVISION OF
 LOTS 1 AND 2, BLOCK 1, PLAN 072 5979
 LOT C, PLAN 6347 K.S.
 AND
 S.W.1/4 SEC.33-TWP.52-RGE.26-W.4th MER.
 ALL IN THE
 N.1/2 SEC.33-TWP.52-RGE.26-W.4th MER.
 AND
 S.W.1/4 SEC.33-TWP.52-RGE.26-W.4th MER.
PARKLAND COUNTY - ALBERTA

LAWRENCE M. PALIS, A.L.S.
 2008

PAIS SURVEYS AND ASSOCIATES LTD.
 10704-176th STREET, EDMONTON, ALBERTA
 PHONE: 455-3177

FILE NO: 07441T SCALE: 1:2000